

WEDDINGS

# Camley Street Natural Park



London  
Wildlife  
Trust



# Love London, Love Nature

London Wildlife Trust is dedicated to the protection of London's wild spaces and engaging London's diverse communities in nature through our free nature reserves, education, volunteering and campaigning.

Our vision for London is a city where wildlife and wild spaces are protected for the future, and where all people treasure wildlife and wild spaces.

The site was once a coal drop for the nearby station, which was demolished in the 1960s. It had been colonised by nature so the Trust ran a campaign to save the site from development and create a nature reserve; which opened in 1985.

The contemporary Visitor Centre has multiple sustainable features; including a natural cooling and ventilation system

and rainwater run-offs. The woodland, grassland and wetland habitats provide a rich space for birds, butterflies, amphibians, and plant life to nest and grow in the city.

The profits raised from events and venue hire directly support our vital work protecting London's wildlife.



London  
Wildlife  
Trust

# Venue Spaces

Sitting on the banks of the Regents Canal, this two acre wildlife haven is our most central venue. With King's Cross and St. Pancras on our doorstep, this location makes a perfect venue for wildlife lovers looking for a convenient city destination.



London  
Wildlife  
Trust

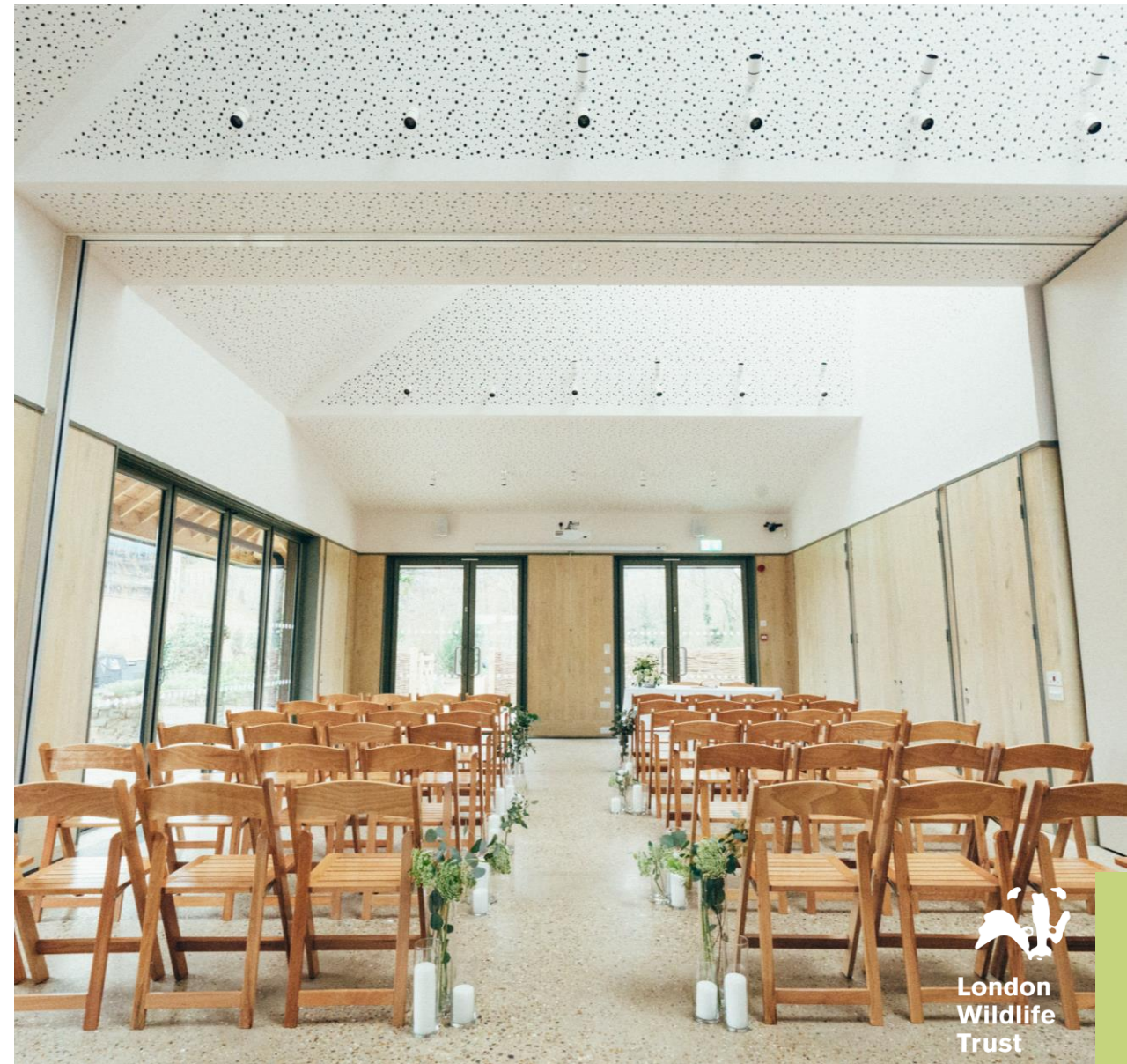
# Kingfisher Suite

Begin your wedding day in the Kingfisher Suite where we are soon to be fully licensed to host weddings and civil partnerships.

A light airy space overlooking Regents Canal and the seasonal blooms of the nature reserve, offers a unique and ambient space to say 'I Do'.

For smaller weddings, we can also accommodate dinner and evening dancing in this space.

	CAPACITY
CEREMONY	80
SEATED DINNER	60
STANDING RECEPTION	120



London  
Wildlife  
Trust



# Terrace & Nature Reserve

Following your ceremony, the terrace is the perfect location to delight your guests with bubbles and canapés whilst enjoying the blossoming views of the meadow.

Guests are welcome to explore our two-hectare nature reserve whilst you sneak off to capture some unique photos together.



## Did You Know

Camley Street Natural Park has attracted at least 47 different bird species including the Kingfisher



London  
Wildlife  
Trust





  
London  
Wildlife  
Trust

# Under the Canopy

Settle down for dinner under the canopy surrounded by our flourishing wildflower bank, with views of Regents canal and cityscape.

Head back into the Kingfisher Suite for evening entertainment and bar where your guests can dance the night away.

	CAPACITY
STANDING RECEPTION	150
BANQUET	120

# Order of the Day

To ensure a smooth transition between all elements of your special day, we would recommend the following schedule:

3 PM	Supplier access to the Kingfisher Suite
5 PM	Guests arrive
5.30 PM	Ceremony in the Kingfisher Suite
6 PM	Drinks reception on the reserve terrace
7 PM	Dinner under the canopy
8.30 PM	Dancing in the Kingfisher Suite
10.30 PM	Bar closed
11 PM	Last song
11.30 PM	All guests departed

Please note the café & nature reserve close at 4pm in the winter (Oct-Mar) and 5pm in the summer (Apr-Sep). We can close the visitor centre up to 1 hour earlier for an additional fee, the above times would then shift accordingly.



London  
Wildlife  
Trust

# Hire Rates

## Ceremony + Reception

### Whole venue

---

ALL SPACES	17:00* – 23:30pm	£4,000 + VAT
------------	---------------------	-----------------

---

*\* Please note the canopy and terrace will be available from 17:30 to set up once closed to the public*

## Evening Reception Only

### Whole venue

---

ALL SPACES	18:00 –23:30pm	£3,500 + VAT
------------	----------------	-----------------

---

## Ceremony only in Kingfisher Suite\*

---

HALF DAY	10:00 - 13:00	£1,750 + VAT
----------	---------------	--------------

---

*\* Please note these timings are inclusive of set up and de-rig times.  
Available Thursdays, Fridays and Sundays only (Saturdays available Oct – March)*

### Whole venue + 1 hour early closure

---

ALL SPACES	16:00* – 23:30pm	£5,000 + VAT
------------	---------------------	-----------------

---

*\* Please note the canopy and terrace will be available from 16:30 to set up once closed to the public*

### Whole venue + 1 hour early closure

---

ALL SPACES	17:00 –23:30pm	£4,500 + VAT
------------	----------------	-----------------

---

## Full day hire

---

WHOLE VENUE	12:00 –23:30pm	£10,000 + VAT
-------------	----------------	------------------

---

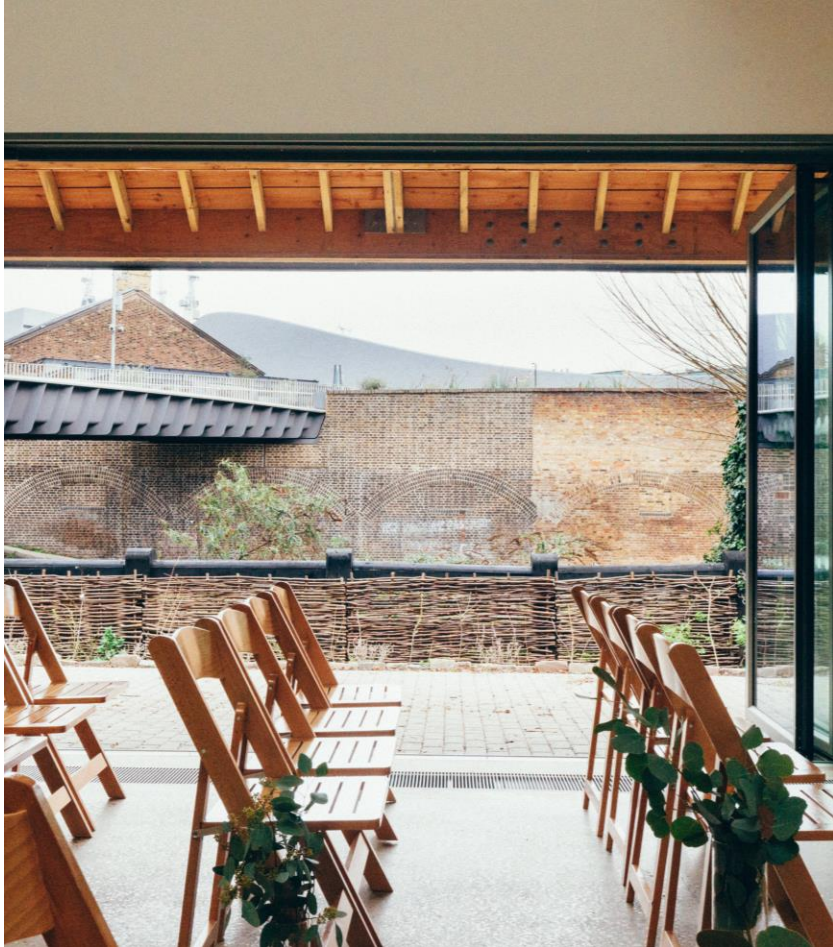
*\* Includes full day closure of the nature reserve and café to the public for a full day*

Caterers and florists will have two hours prior to guest arrival and one hour after guest departure for set up and breakdown.

For couples hosting their ceremony only, the timings to the left are inclusive of any set up and breakdown your suppliers may wish to do.

We are able to provide an inhouse cloakroom service. Quotes for this are available upon request.





The Kingfisher Suite.



London  
Wildlife  
Trust



# Weddings & civil ceremonies

If you wish to hold a legal wedding or civil ceremony with us, the process is as follows:

1.

Provisionally confirm a ceremony date & time with one of our Event Planners

2.

Give notice of the marriage to the borough in which you are resident

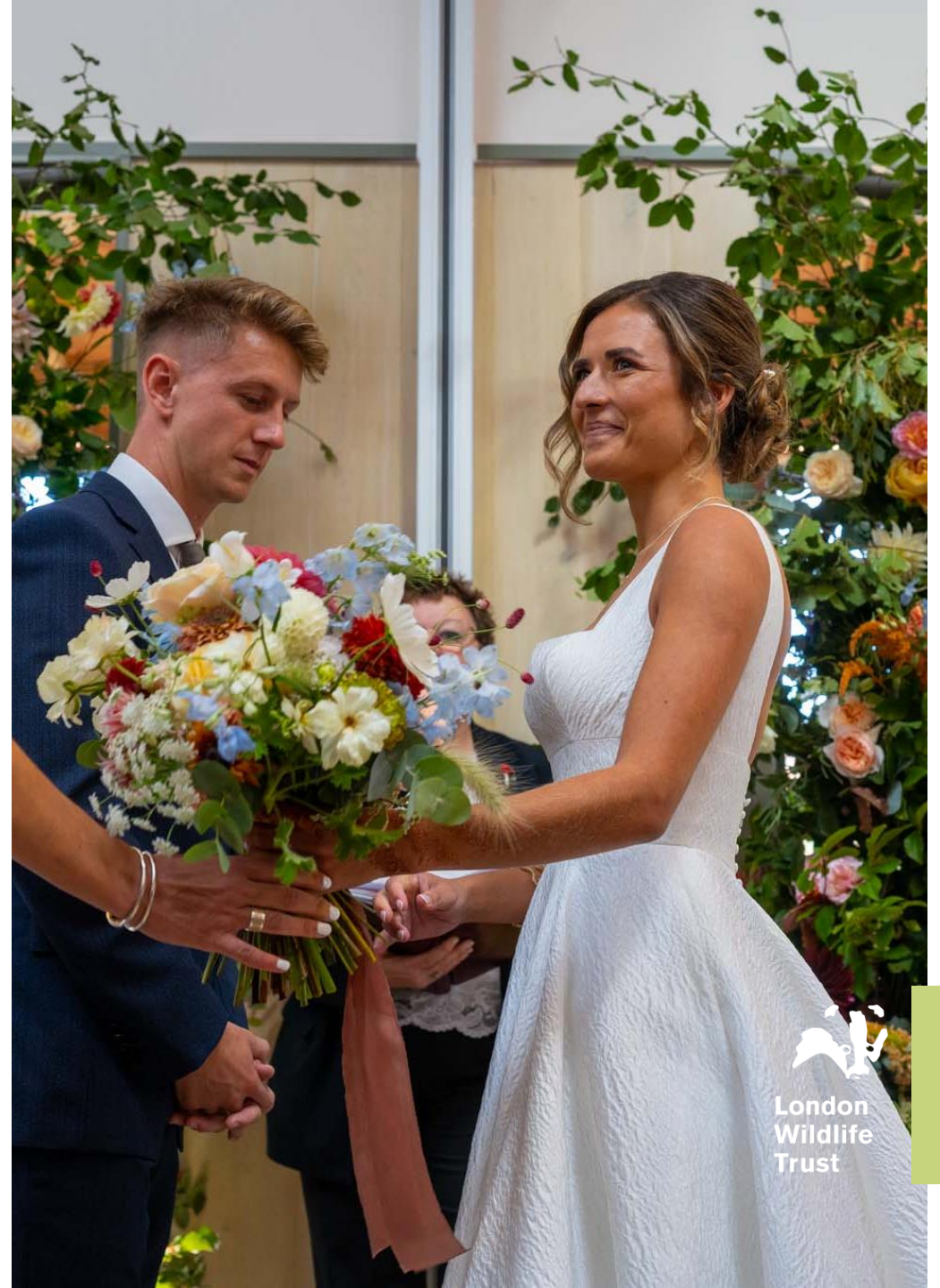
3.

Book your registrar directly with Camden Council

## Useful links

To register with Camden Council Registrars, please visit [here](#).

Further guidance on marriage & civil ceremonies can be found [here](#).



London  
Wildlife  
Trust



# Catering & Bar Service

For your event, we have a list of approved caterers who we kindly require you to use. We will deliver the bar service and packages are as follows:

## Seated Dining Package\*

Arrival Prosecco

Half Bottle of House Wine & Water

Sparkling Toast

£ 25.50 pp

*\*Price per head is subject to change with your final requirements. Package includes staffing fees*

## After Dinner Drinks

Unlimited Wine, Beer and Soft Drinks

Glassware & service included

---

ONE HOUR

£16.50 per person

---

TWO HOURS

£22.50 per person

---

THREE HOURS

£28.50 per person

---

*All prices are exclusive of VAT*

## Pay As You Go

Guests purchase their own drinks

*Subject to set up fees below*

## Pre-paid Tab

A pre-agreed bar tab is open for guests to choose their drinks

*Subject to set up fees below*

## Bar Staffing Fees


Should you wish to opt for a Pay As You Go bar or Pre-paid Tab for your wedding day, please enquire with your event planner for the additional staffing costs associated with this.

If you would like a premium waiting service such as tray service, please ask your event planner to include this within your quote.



London  
Wildlife  
Trust



A wedding couple is seen from behind, walking away on a dirt path through a lush, green forest. The groom is on the left, wearing a dark blue suit. The bride is on the right, wearing a light-colored, sleeveless wedding dress and holding a large bouquet of colorful flowers. The path is bordered by a rustic fence made of sticks and branches. In the background, there are many trees and a wooden bench. The overall atmosphere is romantic and natural.

“We truly had the most amazing day and are so grateful to the team for all their help and hard work realising our perfect wedding!!”

S + B – WEDDING COUPLE



London  
Wildlife  
Trust



## VISITOR CENTRE

The café and nature reserve are open to the general public 7 days a week from 10am until 4pm (Oct-Mar) 5pm (Apr-Sep) and the toilet facilities are shared with event guests during these times.

## FURNITURE

There are 80 wooden folding chairs and 10 simple wooden trestle tables available for use as well as café seating for evening events. If additional furniture is required please discuss with your event planner.

## EVENING ENTERTAINMENT

We allow live bands and DJs but ask that they kindly adhere to the sound limit policy, which is 85 decibels. The Event Manager will monitor levels on the night.

## SECURITY

For evening events and events serving alcohol, we are required by our license to have a member of security staff. The cost is included in the venue hire.



London  
Wildlife  
Trust





Wedding breakfast.



London  
Wildlife  
Trust



# FAQs

## OUR MOST ASKED QUESTIONS

### 1. What decorations can I bring?

You can decorate the interior areas with flowers, candles (in holders) & free standing props. For environmental reasons we do not allow balloons, fireworks or glitter.

### 2. Can my guests use confetti?

Guests may use dried flower petals only but we request this is only thrown outside the building.

### 3. Can I leave items overnight following the event?

The venue is extremely limited on storage space and is in frequent use so all items will need to be taken off site by the end of the hire time.

### 4. Is there parking?

No, there is no parking available on site. There is a small entrance way for deliveries to be dropped off but all vehicles must be kept offsite.

### 5. Can my guests go in the nature reserve?

Guests are welcome to walk freely around the nature reserve in daylight hours, but glass is strictly prohibited and so we would restrict access once the bar is open during evening events. During the winter (Oct – Mar) access to the nature reserve in the evening will be assessed on a case by case basis.



London  
Wildlife  
Trust





# Visit Us

A member of our friendly Events Team would be delighted to show you round our spaces at Camley Street Natural Park.

We are available for site visits  
Monday to Friday 09:30 – 17:00

Camley Street is located just a 5 minute walk away from Kings Cross St Pancras and is accessible to wheelchair users.

If you have any queries, please contact the Events Team on [events@wildlondon.org.uk](mailto:events@wildlondon.org.uk)



London  
Wildlife  
Trust