

WEDDINGS

Camley
Street
Natural Park



London
Wildlife
Trust

Love London, Love Nature

London Wildlife Trust is dedicated to the protection of London's wild spaces and engaging London's diverse communities in nature through our free nature reserves, education, volunteering and campaigning.

Our vision for London is a city where wildlife and wild spaces are protected for the future, and where all people treasure wildlife and wild spaces.

The site was once a coal drop for the nearby station, which was demolished in the 1960s. It had been colonised by nature so the Trust ran a campaign to save the site from development and create a nature reserve; which opened in 1985.

The contemporary Visitor Centre has multiple sustainable features; including a natural cooling and ventilation system

and rainwater run-offs. The woodland, grassland and wetland habitats provide a rich space for birds, butterflies, amphibians, and plant life to nest and grow in the city.

The profits raised from events and venue hire directly support our vital work protecting London's wildlife.



London
Wildlife
Trust

Venue Spaces

Sitting on the banks of the Regents Canal, this two acre wildlife haven is our most central venue. With King's Cross and St. Pancras on our doorstep, this location makes a perfect venue for wildlife lovers looking for a convenient city destination.



London
Wildlife
Trust

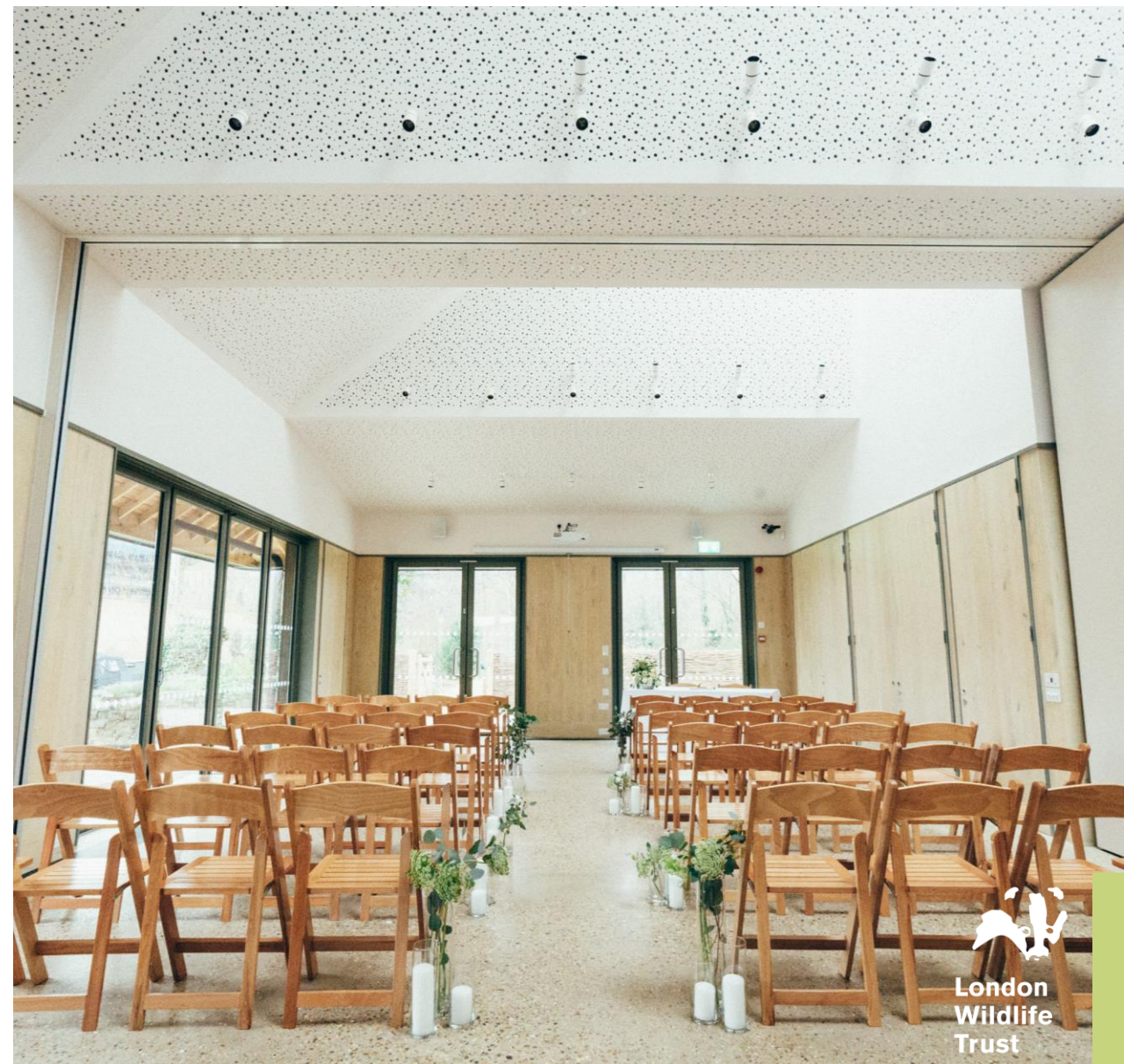
Kingfisher Suite

Begin your wedding day in the Kingfisher Suite where we are soon to be fully licensed to host weddings and civil partnerships.

A light airy space overlooking Regents Canal and the seasonal blooms of the nature reserve, offers a unique and ambient space to say 'I Do'.

For smaller weddings, we can also accommodate dinner and evening dancing in this space.

	CAPACITY
CEREMONY	80
SEATED DINNER	60
STANDING RECEPTION	120



Terrace & Nature Reserve

Following your ceremony, the terrace is the perfect location to delight your guests with bubbles and canapés whilst enjoying the blossoming views of the meadow.

Guests are welcome to explore our two-hectare nature reserve whilst you sneak off to capture some unique photos together.



Did You Know

Camley Street Natural Park has attracted at least 47 different bird species including the Kingfisher



London
Wildlife
Trust



London
Wildlife
Trust

Under the Canopy

Settle down for dinner under the canopy surrounded by our flourishing wildflower bank, with views of Regents canal and cityscape.

Head back into the Kingfisher Suite for evening entertainment and bar where your guests can dance the night away.

CAPACITY

STANDING RECEPTION 150

BANQUET 120

Order of the Day

To ensure a smooth transition between all elements of your special day, we would recommend the following schedule:

3 PM	Supplier access to the Kingfisher Suite
5 PM	Guests arrive
5.30 PM	Ceremony in the Kingfisher Suite
6 PM	Drinks reception on the reserve terrace
7 PM	Dinner under the canopy
8.30 PM	Dancing in the Kingfisher Suite
10.30 PM	Bar closed
11 PM	Last song
11.30 PM	All guests departed

Please note the café & nature reserve close at 4pm in the winter (Oct-Mar) and 5pm in the summer (Apr-Sep). We can close the visitor centre up to 1 hour earlier for an additional fee, the above times would then shift accordingly.



London
Wildlife
Trust

Hire Rates

Ceremony + Reception

Whole venue

ALL SPACES	17:00* – 23:30pm	£3,500 + VAT
------------	---------------------	-----------------

** Please note the canopy and terrace will be available from 17:30 to set up once closed to the public*

Evening Reception Only

Whole venue

ALL SPACES	18:00 – 23:30pm	£3,000 + VAT
------------	--------------------	-----------------

Ceremony only in Kingfisher Suite*

HALF DAY	10:00 - 13:00	£1,000 + VAT
----------	---------------	--------------

** Please note these timings are inclusive of set up and de-rig times. Available Thursdays, Fridays and Sundays only (Saturdays available Oct – March)*

Whole venue + 1 hour early closure

ALL SPACES	16:00* – 23:30pm	£4,500 + VAT
------------	---------------------	-----------------

** Please note the canopy and terrace will be available from 16:30 to set up once closed to the public*

Whole venue + 1 hour early closure

ALL SPACES	17:00 – 23:30pm	£4,000 + VAT
------------	--------------------	-----------------

Full day hire

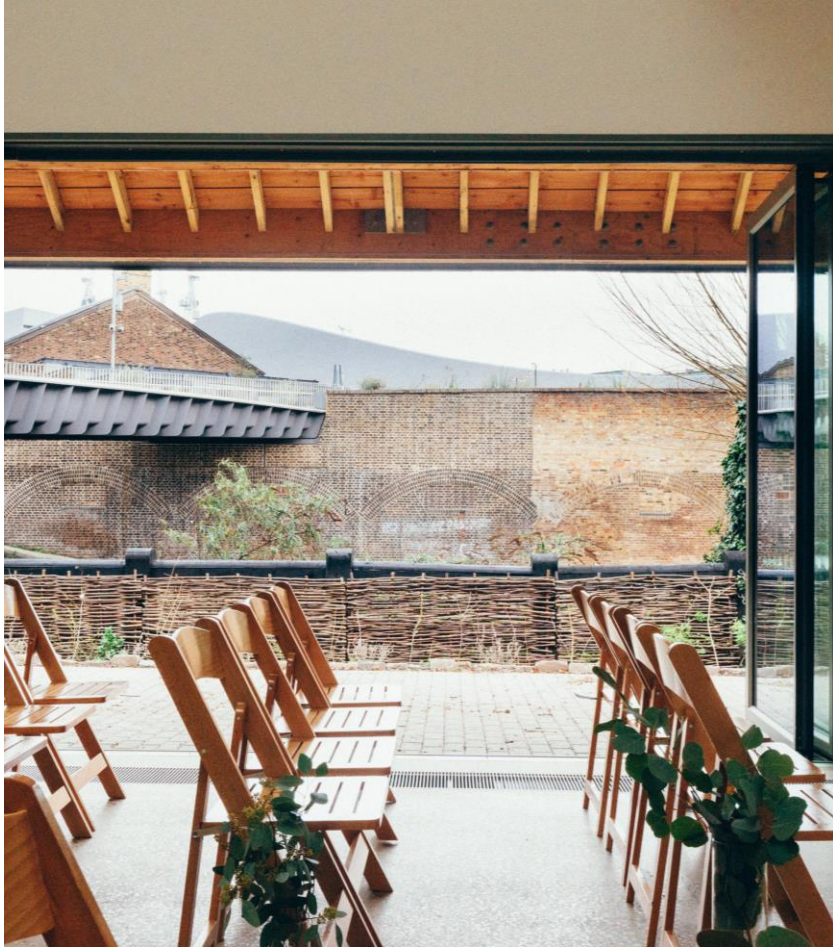
WHOLE VENUE	12:00 –23:30pm	£10,000 + VAT
-------------	----------------	------------------

** Includes full day closure of the nature reserve and café to the public for a full day*

Caterers and florists will have two hours prior to guest arrival and one hour after guest departure for set up and breakdown.

For couples hosting their ceremony only, the timings to the left are inclusive of any set up and breakdown your suppliers may wish to do.

We are able to provide an inhouse cloakroom service. Quotes for this are available upon request.



The Kingfisher Suite.



London
Wildlife
Trust

Weddings & civil ceremonies

If you wish to hold a legal wedding or civil ceremony with us, the process is as follows:

1.

Provisionally confirm a ceremony date & time with one of our Event Planners

2.

Give notice of the marriage to the borough in which you are resident

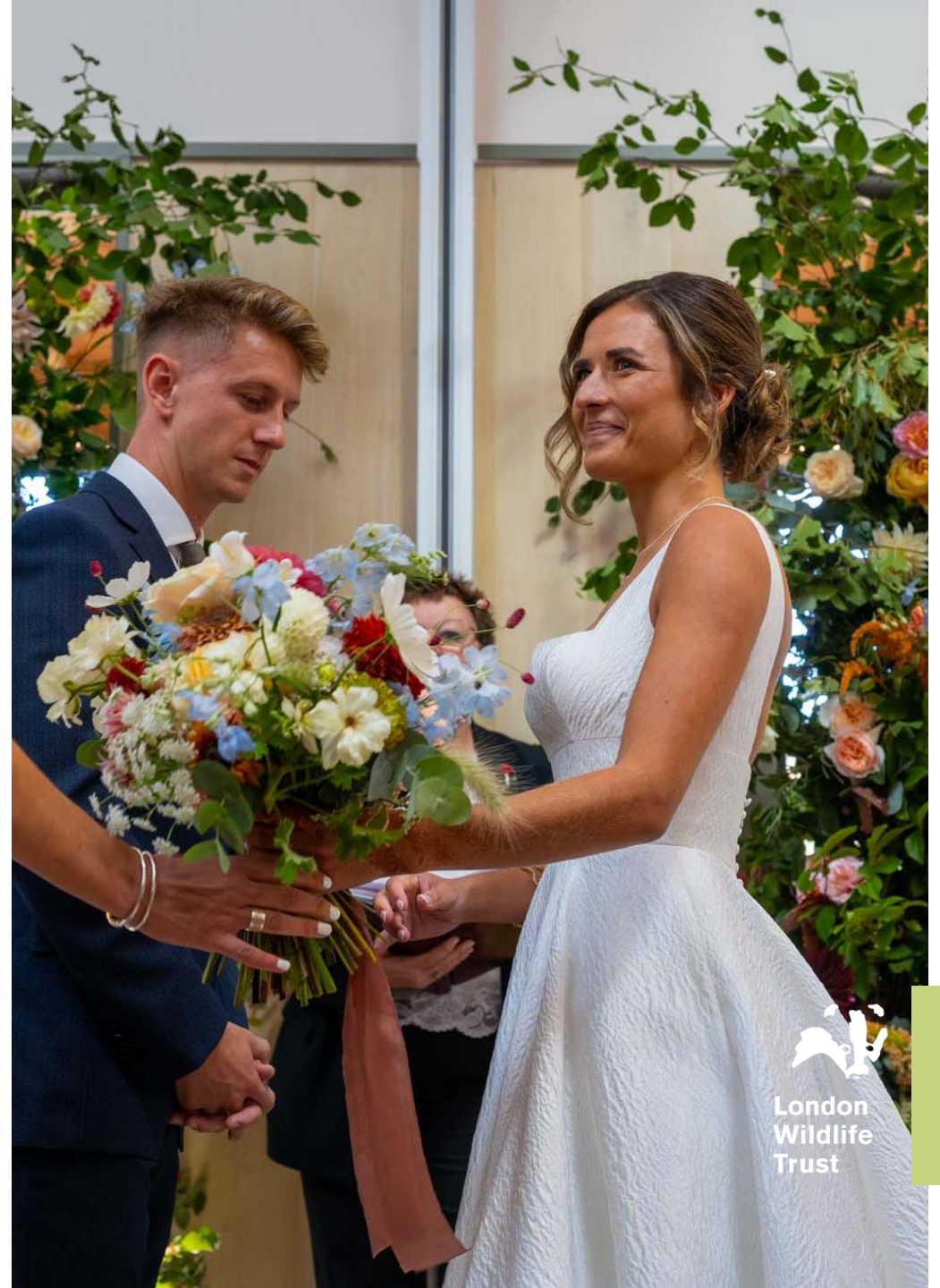
3.

Book your registrar directly with Camden Council

Useful links

To register with Camden Council Registrars, please visit [here](#).

Further guidance on marriage & civil ceremonies can be found [here](#).



London
Wildlife
Trust

Catering & Bar Service

For your event, we have a list of approved caterers who we kindly require you to use. We will deliver the bar service and packages are as follows:

Seated Dining Package*

Arrival Prosecco

Half Bottle of House Wine & Water

Sparkling Toast

£ 25.50 pp

**Price per head is subject to change with your final requirements. Package includes staffing fees*

After Dinner Drinks

Unlimited Wine, Beer and Soft Drinks

Glassware & service included

ONE HOUR

£16.50 per person

TWO HOURS

£22.50 per person

THREE HOURS

£28.50 per person

All prices are exclusive of VAT

Pay As You Go

Guests purchase their own drinks

Subject to set up fees below

Pre-paid Tab

A pre-agreed bar tab is open for guests to choose their drinks

Subject to set up fees below


Bar Staffing Fees

Should you wish to opt for a Pay As You Go bar or Pre-paid Tab for your wedding day, please enquire with your event planner for the additional staffing costs associated with this.

If you would like a premium waiting service such as tray service, please ask your event planner to include this within your quote.



London
Wildlife
Trust



“We truly had the most amazing day and are so grateful to the team for all their help and hard work realising our perfect wedding!!”

S + B – WEDDING COUPLE



London
Wildlife
Trust

VISITOR CENTRE

The café and nature reserve are open to the general public 7 days a week from 10am until 4pm (Oct-Mar) 5pm (Apr-Sep) and the toilet facilities are shared with event guests during these times.

FURNITURE

There are 80 wooden folding chairs and 10 simple wooden trestle tables available for use as well as café seating for evening events. If additional furniture is required please discuss with your event planner.

EVENING ENTERTAINMENT

We allow live bands and DJs but ask that they kindly adhere to the sound limit policy, which is 85 decibels. The Event Manager will monitor levels on the night.

SECURITY

For evening events and events serving alcohol, we are required by our license to have a member of security staff. The cost is included in the venue hire.



London
Wildlife
Trust



Wedding breakfast.



London
Wildlife
Trust

FAQs

OUR MOST ASKED QUESTIONS

1. What decorations can I bring?

You can decorate the interior areas with flowers, candles (in holders) & free standing props. For environmental reasons we do not allow balloons, fireworks or glitter.

2. Can my guests use confetti?

Guests may use dried flower petals only but we request this is only thrown outside the building.

3. Can I leave items overnight following the event?

The venue is extremely limited on storage space and is in frequent use so all items will need to be taken off site by the end of the hire time.

4. Is there parking?

No, there is no parking available on site. There is a small entrance way for deliveries to be dropped off but all vehicles must be kept offsite.

5. Can my guests go in the nature reserve?

Guests are welcome to walk freely around the nature reserve in daylight hours, but glass is strictly prohibited and so we would restrict access once the bar is open during evening events. During the winter (Oct – Mar) access to the nature reserve in the evening will be assessed on a case by case basis.



Visit Us

A member of our friendly Events Team would be delighted to show you round our spaces at Camley Street Natural Park.

We are available for site visits
Monday to Friday 09:30 – 17:00

Camley Street is located just a 5 minute walk away from Kings Cross St Pancras and is accessible to wheelchair users.

If you have any queries, please contact the Events Team on events@wildlondon.org.uk



London
Wildlife
Trust